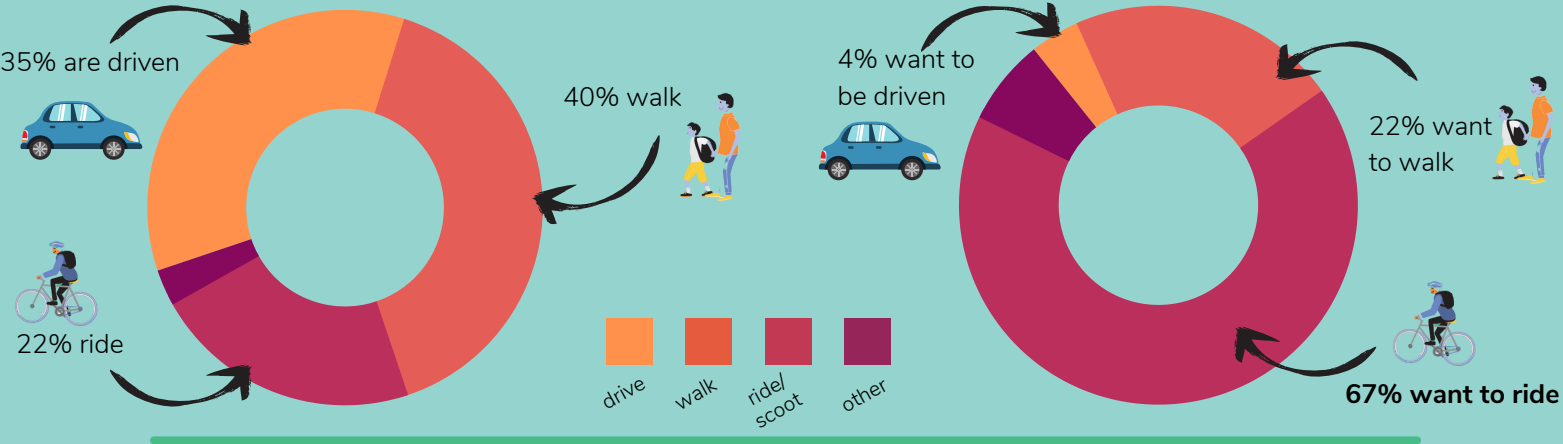




Brunswick East Primary

Travel to school data - Ride and Stride Report

How students currently travel to school VS. How students would like to travel to school



15min walk

94%

of families that live within 1km travel actively to school

15min ride

68%

of families that live between 1-3km travel actively to school

91% of families live within a 15min walk or ride of school

93%

of BEPS children have a working bike

52%

of children are considered competent riders

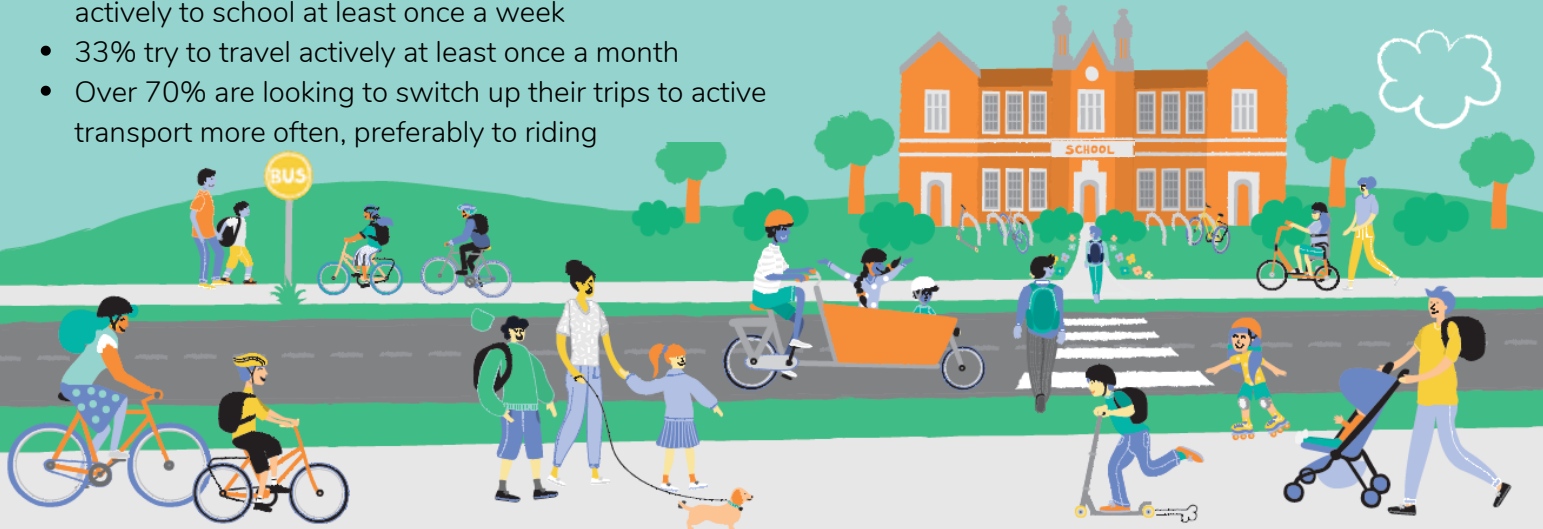
Top 5 Ride & Stride areas to address at Brunswick East Primary School:

'What would make it easier for you & your children to walk, scoot or ride their bike to school more often?'

1. Safer crossings near school
2. Knowledge that my child has arrived safely if travelling independently/with friends
3. Clearly signed bicycle paths/footpaths to the school
4. Less traffic/congestion around the school
5. Programs to teach my child about road safety & independent travel

61% of families that drive to school live within 3kms/15min ride

- 30% of the families who drive to school, try to travel actively to school at least once a week
- 33% try to travel actively at least once a month
- Over 70% are looking to switch up their trips to active transport more often, preferably to riding



Baseline Active Travel Rate: 61% → Target Active Travel Rate: 71%